



**Powerhouse Civil Ltd**

Editors note: Teletrac Inc. and Navman Wireless are now merged as a global telematics powerhouse. This content was created prior to the unification of both brands.

## What Powerhouse Civil learned by tracking their fleet

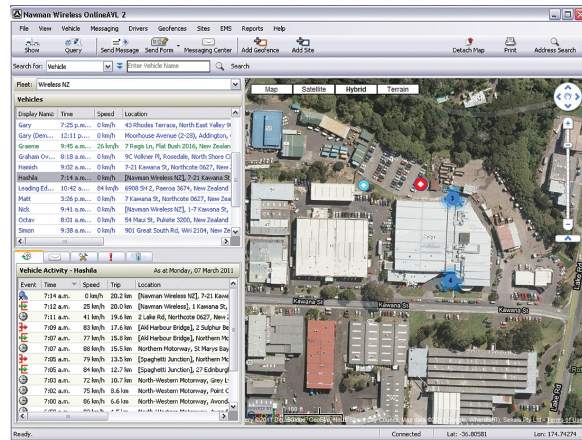
Powerhouse Civil Ltd is a civil contracting company that can fulfil all contracting needs. They have trucks including tip trucks, crew wagons, diggers, a saw cutting machine and more. They subcontract to various companies with a key part of the business working alongside Power Providers. Shannon Philcox, Manager, has been in the construction industry for almost 20 years and established Powerhouse Civil to give customers the resources of a bigger company with the personal touch of a small business.

Powerhouse Civil has been in business since 2005 and has had Navman Wireless tracking and navigation installed in its vehicles for almost all of that time.

Mr. Philcox and company director, Nicky Lindique, chose Navman Wireless after experiencing Navman's in-car navigation devices. Ms Lindique says, "Navman Wireless is more user friendly than others and we've been able to buy the tracking units outright which is financially beneficial to us."

### Equipment Security

They initially looked at GPS tracking because they leave vehicles on-site and wanted to ensure they're safe. "The business grew substantially so we purchased equipment for all our vehicles. When you're investing your own money in this kind of machinery, you want to know where it is at all times. GPS limits risk and increases the chance of equipment being found if it is stolen," explains Mr. Philcox.



### POWERHOUSE CIVIL ENJOYS THESE BENEFITS WITH NAVMAN WIRELESS:

- A better view of the entire business
- More accurate timesheets and billing
- Peace of mind regarding equipment security
- A system that's been very easy to install and use

## Navman Wireless Creates Efficiency

Mr. Philcox uses the OnlineAVL2 application via his PC to see his trucks throughout the country at all times. He says, "We can easily view our trucks, track travel and idle time, and monitor fuel consumption."

*"Because we can see where our vehicles and crews are at any time of the day, we've saved money for our business and clients."*

**Shannon Philcox**  
Manager, Powerhouse Civil Ltd

Navman Wireless's Geofence and Customer Site features make tracking incredibly simple and help with invoicing. Ms Lindique says, "We set up Customer Sites for the sites we visit often and include this information on invoices so our customers know how many times we've been to a specific tip or quarry in a day. Billing discrepancies have been practically eliminated."

Additionally, Geofences and Customer Sites enable Powerhouse Civil to make more accurate off-road kilometer claims to the LTSA. They've also created Geofences around specific areas so if any truck goes outside these areas on the weekend, they receive a text message on their mobile phone to alert them.

## Savings from Fuel and Wage Costs

Mr. Philcox says, "Our crew wagons which carry diesel tanks, have a ConEx device connected so we know when and where the tank is pumping. This visibility of fuel usage is great for our costings/ budgets and we can use this information when pricing work."

The Navman Wireless system has also made truck drivers and crews more aware of their actions. "Because we can report on idling time, the guys now pay more attention and turn the trucks off if they're not using them, saving us money on fuel and maintenance costs," states Mr. Philcox.

Overall, the accuracy that Navman Wireless offers has given Powerhouse Civil peace of mind with wages as they can pay all their staff fairly, as they use the reports as electronic timesheets to see when the crew start and finish their day.

## Easy to Install and Use

To fit Navman Wireless devices in each of Powerhouse Civil's trucks, they simply pulled all the trucks into their yard and installed the devices over one weekend. Mr. Philcox says, "Installation was easy and the training and support we received has been very good. We instantly understood how to use the OnlineAVL2 system."

He concludes, "From tracking, reporting, managing and invoicing, Navman Wireless is part of how we do business everyday."



*"We want to make it easy for our customers to do business with us. Navman Wireless helps us achieve this goal."*

**Shannon Philcox**  
Manager, Powerhouse Civil Ltd